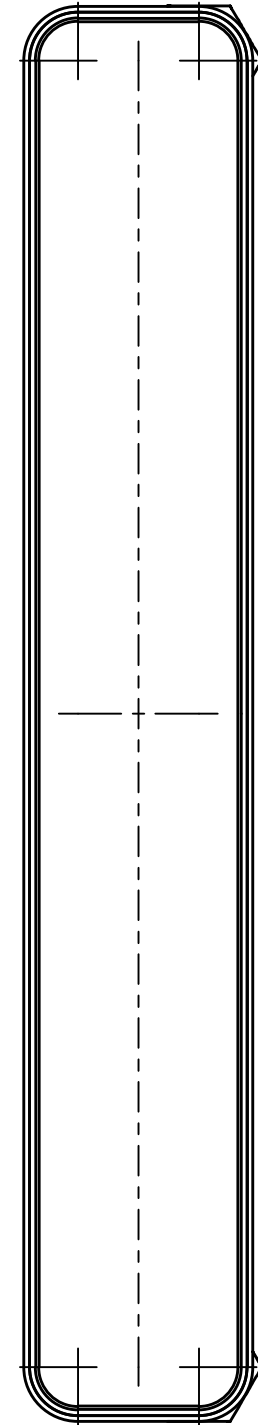
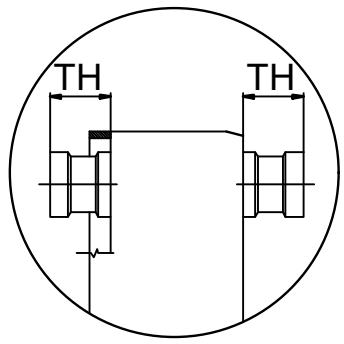
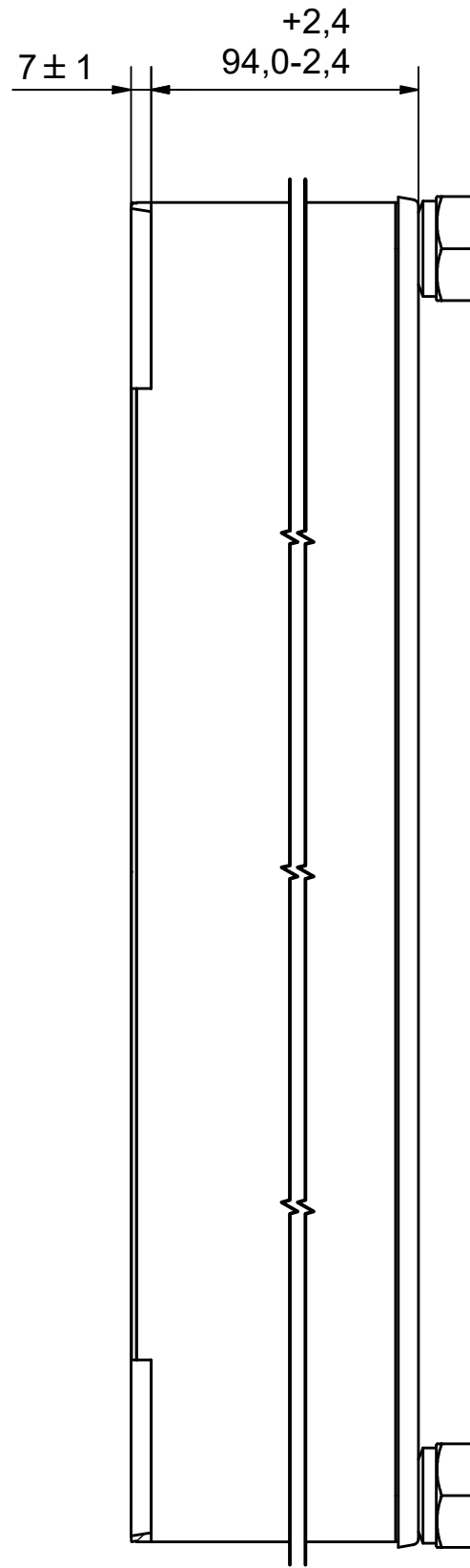


NOTE 1



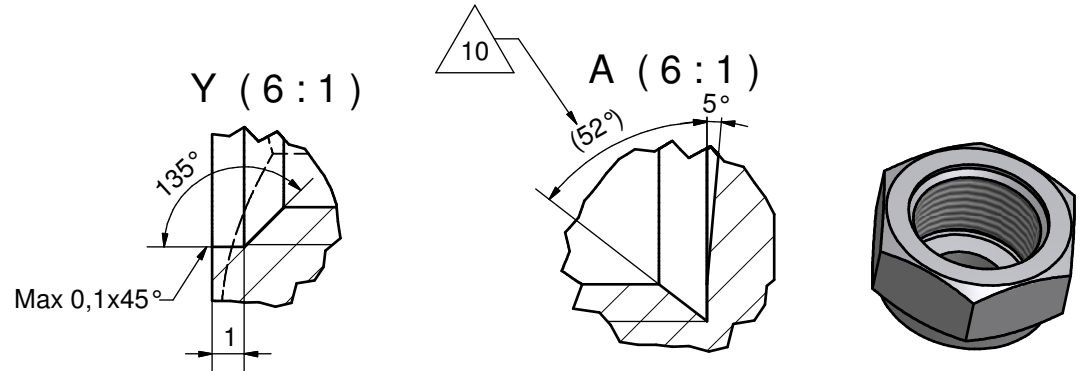
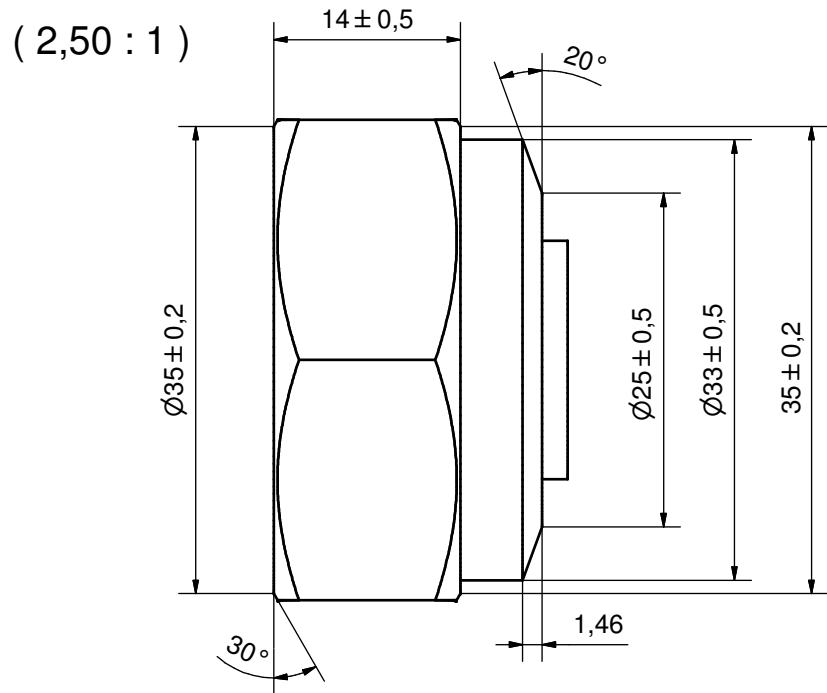
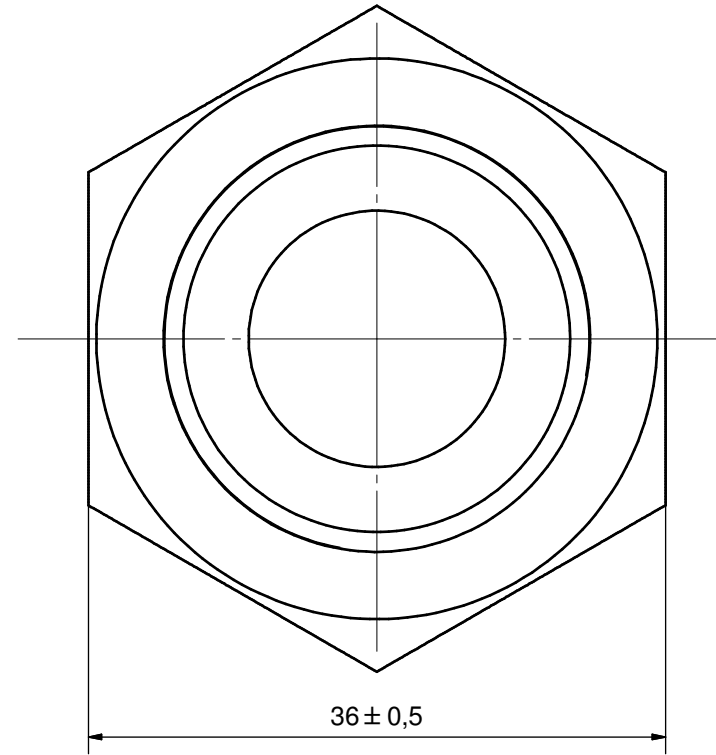
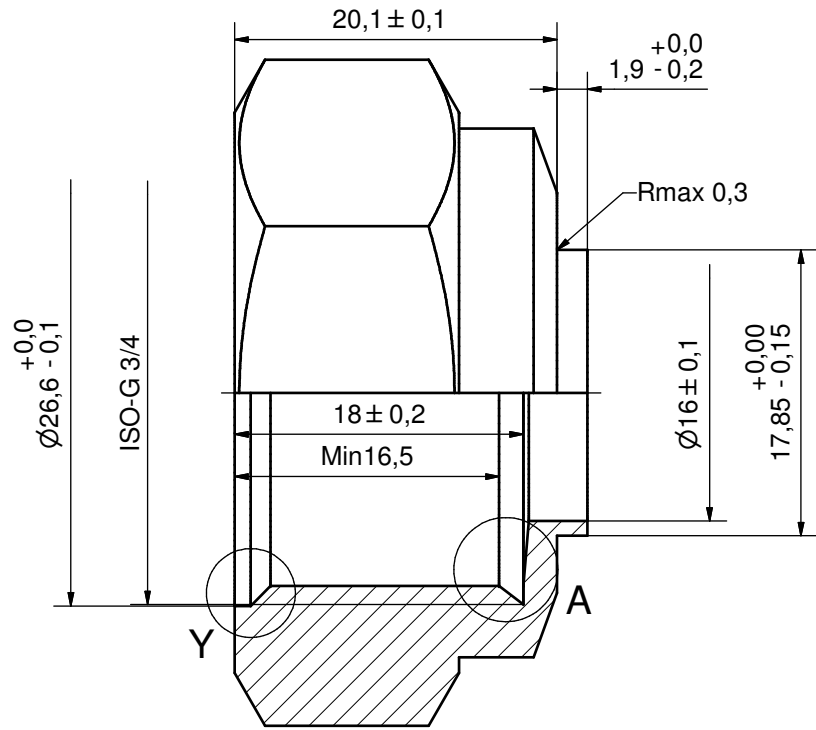
NOTE 1 ALTERNATE MARKING: STICKER OR STAMP

F4	45411	ISO-G 1/2 INT HEX, TH = 20,1	CD000005
F3	45429	ISO-G 3/4, TH = 20,1	CD000007
F2	45411	ISO-G 1/2 INT HEX, TH = 20,1	CD000005
F1	45429	ISO-G 3/4, TH = 20,1	CD000007
Pos	Article No	Title / Denomination, code, material, dimension etc	Drawing No./ref

Pos	Article No	Title / Denomination, code, material, dimension etc	Drawing No./ref
-----	------------	---	-----------------


Title		<b>B15TH/1P-SC-M</b>	
		Created Date	2025-01-04
		Created By	AU
		Article/Configuration number	0194393.0
		Drawing number	AU00075576_0194393.0

Rev No	Alteration	Date	Checked	Approved
10	Design Changed according to RD100928	2012-04-26	INRJ	PDM

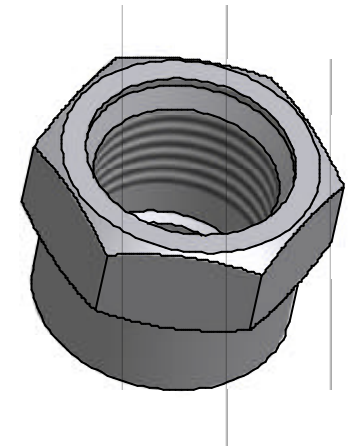
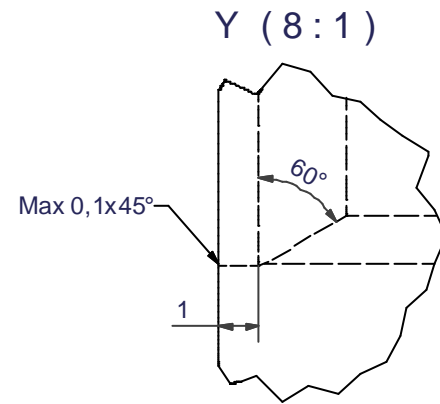
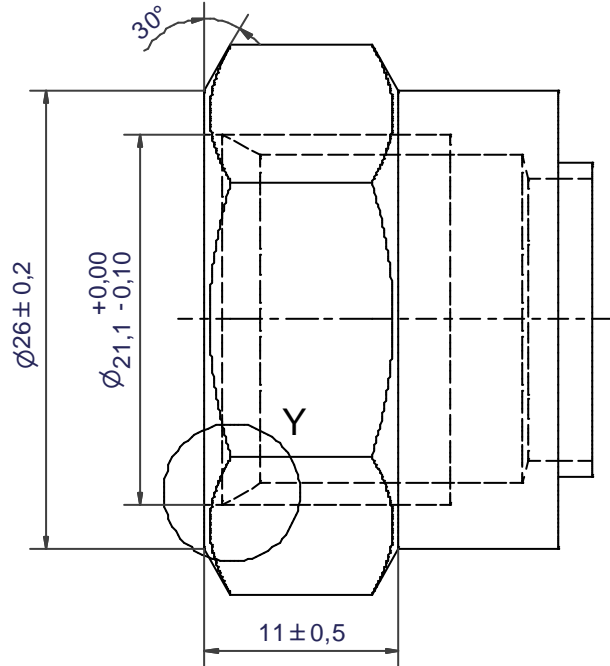
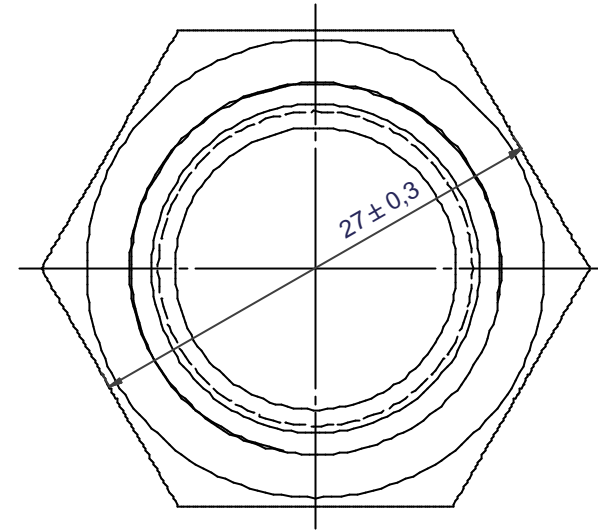
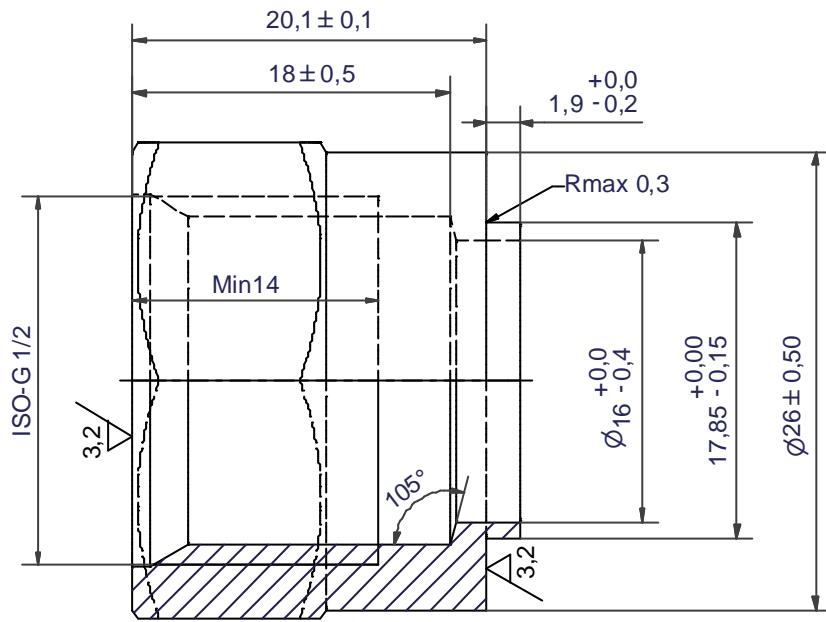


DEBURR SHARP EDGES; MAX 0.4

ACCORDING TO MQS  
MATERIAL

Drawn HR	Checked TP	Approved PDM	Created Date 1992-08-31	General geometrical tolerancing ISO 2768 m	General surface finish $R_a$ : 3.2	Scale -	Paper size A3
			Title ISO-G 3/4				
Article / Tool number CD		Design Type CD		Drawing number CD000007		Revision 10	Sheet 1 (1)

Rev No.	Alteration	Date	Checked	Approved
10	REDRAWN IN INVENTOR	2004/07/06	TN	PDM



Drawn <b>HR</b>	Checked <b>TP</b>	Approved <b>VP</b>	Created Date 1992/05/05	General geometrical tolerancing ISO 2768 <b>m</b>	General surface finish $R_a$ <b>3,2</b>		Scale <b>7:2</b>
<b>SWEF</b>			<b>ISO-G 1/2 INT HEX</b>				
<b>A DOVER COMPANY</b>			Article number -	Drawing number <b>CD000005</b>	Revision <b>10</b>	Sheet <b>1 (1)</b>	